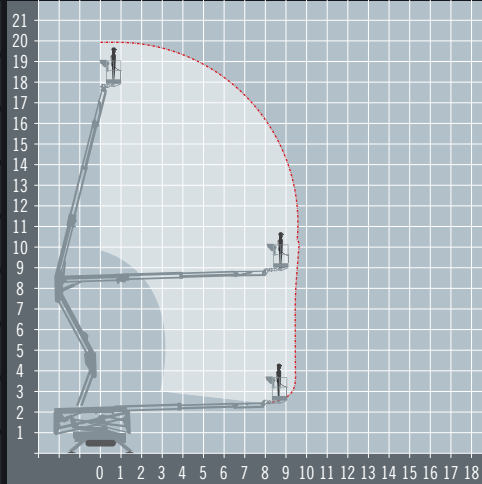


HINOWA LL2010

ALTERNATIVES: Niftylift SD210

Tracked boom platform

REACH HEIGHT	20.15 m
PLATFORM HEIGHT	18.15 m
UP AND OVER	8.15 m
HORIZONTAL REACH	9.7 m
STOWED HEIGHT	1.99 m
DEPLOYED WIDTH	2.93 m
PLATFORM SIZE	1.34 x 0.69 m
WEIGHT	2,880 kg
LIFT CAPACITY	230 kg



Stowed travel size is 5.01 x 0.8 m (16' 5" x 2' 7")

110v MAINS/DIESEL POWERED
110v 3kva with diesel engine for travel

TRACKED FOR ROUGH TERRAIN
Perfect when low ground pressure is needed

LEVELLING STABILISERS
Levels the machine for use on uneven ground

EXTENDING AXLES
Axles extend for use and retract for transport

OUTDOOR RATED
Wind rated for outdoor use

IPAF 1b
Requires IPAF category 1b

The Hinowa Lightlift 20.10 is a compact and functional tracked access platform. It can work across the whole working area with two operators with 230 kg weight, which increases the productivity permitting the operator to carry the necessary tools in the cage, keeping the relation between load capacity / machine's weight extremely safe.

A range of extra's for 'Hire or Purchase' designed to give you the GTAdvantage™

STOP NUISANCE BORROWING WITH GTA SECURE™

PROTECT SENSITIVE GROUND WITH 'GROUND GUARDS'

DOUBLE POINT HARNESSSES TO KEEP YOU SAFE AT HEIGHT

SPREAD THE LOAD WITH THE RIGHT SIZE SPREADER PLATES

STAY FULLY CHARGED WITH TRANSFORMERS AND LEADS

FUEL BOX REFUEL ON-SITE THE EASY WAY WITH A FUEL BOX!

Find out more about the 'GTAdvantage' extras at gtaccess.co.uk

